

仮訳 豪州のコロナ対策の出口戦略（国家計画）

（2021年8月6日 国家内閣にて正式決定）

各州・準州における各段階への移行は、ワクチン接種の適性人口（16歳以上）の割合として示されるワクチン接種率の全国平均値が閾値に達し、かつ、当該州・準州における接種率が閾値に達した時点で判断される。

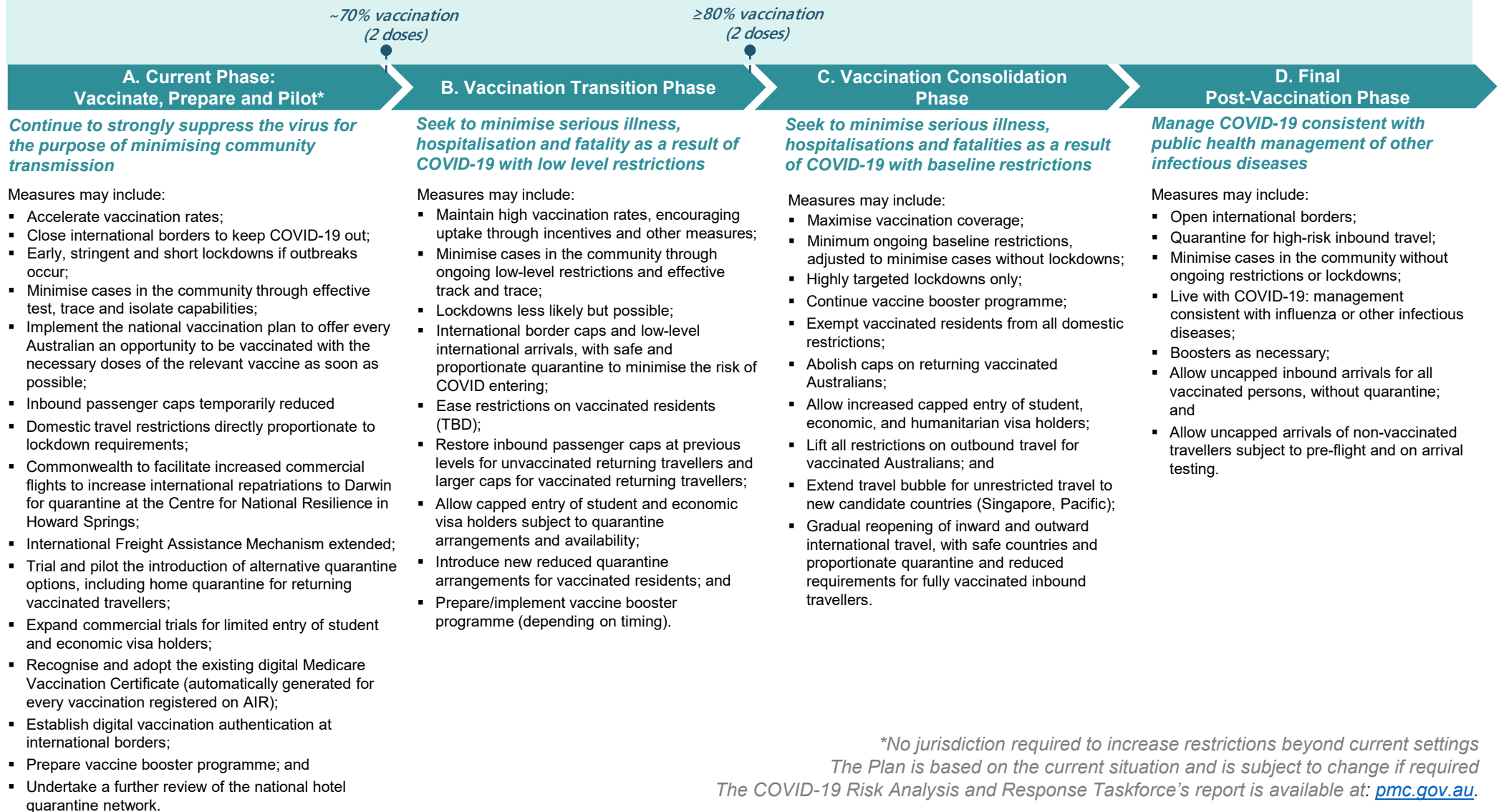




National Plan to transition Australia's National COVID-19 Response

National Cabinet agreed to a plan to transition Australia's National COVID-19 Response from its current pre vaccination settings, focussing on continued suppression of community transmission, to post vaccination settings focussed on prevention of serious illness, hospitalisation and fatality, and the public health management of other infectious diseases

Phases triggered in a jurisdiction when the average vaccination rates across the nation have reached the threshold and that rate is achieved in a jurisdiction expressed as a percentage of the eligible population (16+), based on the scientific modelling conducted for the COVID-19 Risk Analysis and Response Task Force



**No jurisdiction required to increase restrictions beyond current settings*

The Plan is based on the current situation and is subject to change if required

The COVID-19 Risk Analysis and Response Taskforce's report is available at: pmc.gov.au.